



SPECIALISTS FOR HIGH FREQUENCY

36-Foot Whip Antenna V802M and V802FTM

NSN 5985-99-525-4038

TYPICAL APPLICATIONS

- Fast patrol boats
- Maritime coastal stations
- Radio beacon monitor
- Tactical shelters
- Airports

The Valcom V802M/V802FTM is a militarized version of the standard V802 series antennas. The V802 series antenna is a rugged, self-supporting, medium duty 36-foot (11M) epoxy fibreglass vertical antenna. It is capable of operation up to 5 KW peak power over the frequency range of 1.6 to 30 MHz, and reduced power down to 800 KHz. It consists of two sections: a top section and a combined bottom section and base insulator. The pedestal base is actually a smooth continuation of the high tensile strength fibers that comprise the bottom section, forming an exceptionally strong assembly with excellent electrical and mechanical characteristics. With its integral base insulator, it is much lighter and stronger than the obsolete brass and porcelain type insulator.

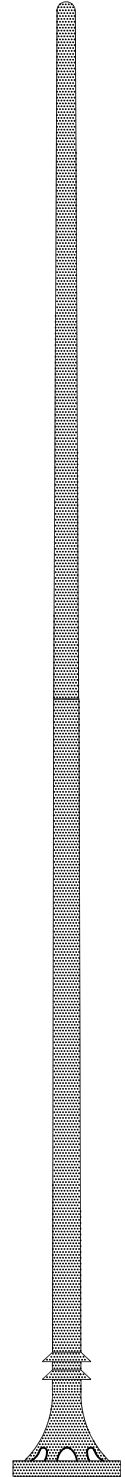
The antenna is available in either of two models: the Model V802M which has an electrical feed-point 12 in (30.5CM) above the mounting flange, and the Model V802FTM which has a molded axial feed-through insulator that feeds electrically from below the antenna mounting flange.

Valcom has designed communications antennas for many years, for environments ranging from the tropics to the arctic. Model V802M and V802FTM are designed to operate in winds of up to 100 MPH (160 km/Hr) or with winds of up to 75 MPH (120 Km/Hr) with up to 0.5 in (1.27 cm) of radial ice.

The two sections of the antenna are joined together with molded-in threaded brass couplings. A brass ball is fitted to the top of the antenna to prevent corona at high power levels.

The antennas are finished in epoxy polyamide paint. The standard color is grey, optionally, other color schemes such as olive drab, white, candy stripe, international fluorescent red and desert sand are also available.

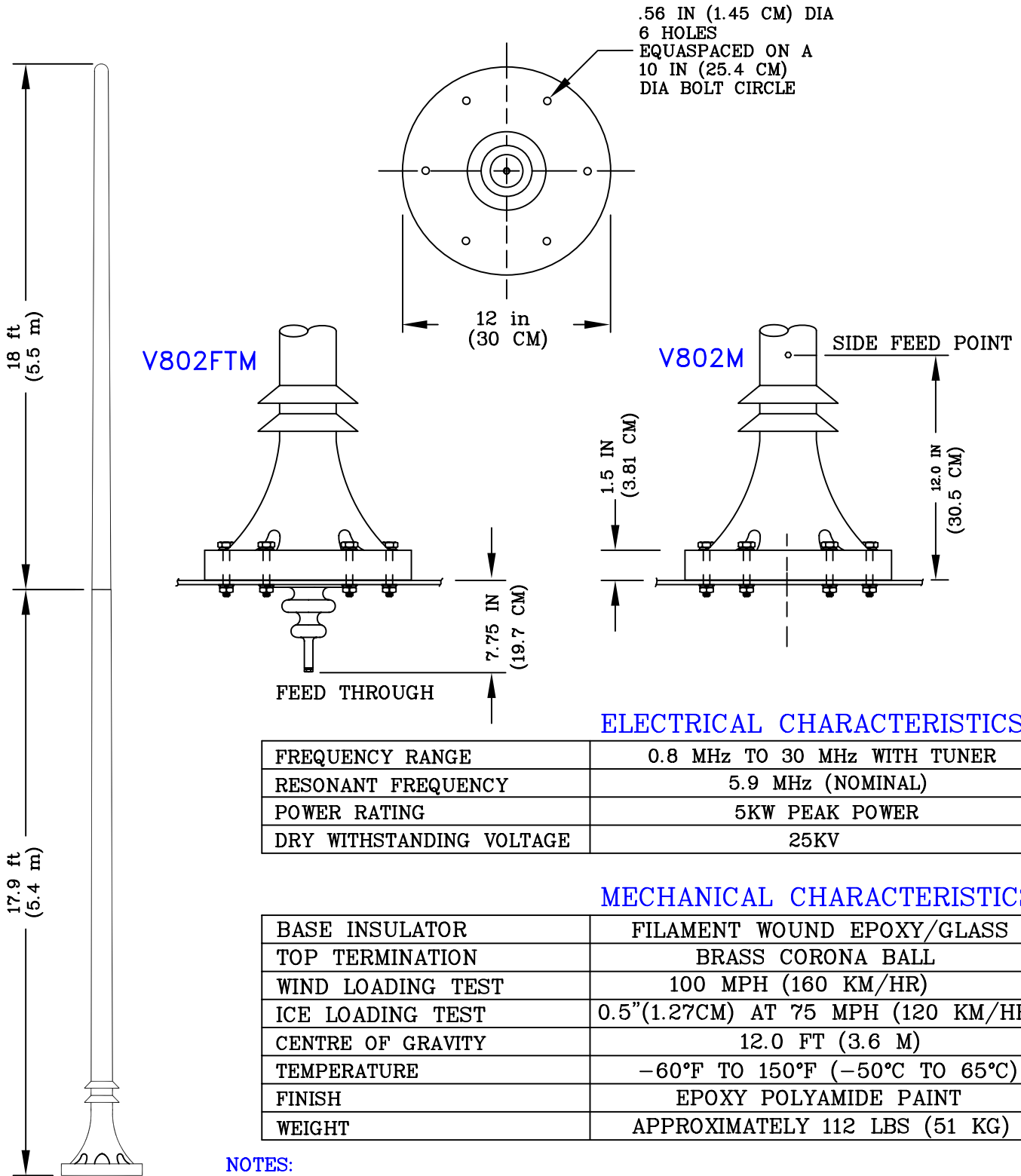
Valcom provides broadband matching transformers for receiving applications, such as the BBMT-50. In addition, narrow-band transmitting antenna couplers are available.



FEATURES:

- RUGGED
- LIGHT WEIGHT
- SELF SUPPORTING
- MATCHES A WIDE RANGE OF COMMUNICATIONS SYSTEMS

V802M AND V802FTM QUICK REFERENCE DATA



ELECTRICAL CHARACTERISTICS

FREQUENCY RANGE	0.8 MHz TO 30 MHz WITH TUNER
RESONANT FREQUENCY	5.9 MHz (NOMINAL)
POWER RATING	5KW PEAK POWER
DRY WITHSTANDING VOLTAGE	25KV

MECHANICAL CHARACTERISTICS

BASE INSULATOR	FILAMENT WOUND EPOXY/GLASS
TOP TERMINATION	BRASS CORONA BALL
WIND LOADING TEST	100 MPH (160 KM/HR)
ICE LOADING TEST	0.5"(1.27CM) AT 75 MPH (120 KM/HR)
CENTRE OF GRAVITY	12.0 FT (3.6 M)
TEMPERATURE	-60°F TO 150°F (-50°C TO 65°C)
FINISH	EPOXY POLYAMIDE PAINT
WEIGHT	APPROXIMATELY 112 LBS (51 KG)

NOTES:

- DO NOT USE LEAD BASE PAINT TO TOUCH-UP OR REPAINT ANTENNA. USE ONLY EPOXY BASE PAINT.

