

World's Leading Manufacturer Of Fibreglass Whip Antennas



SPECIALISTS FOR VERY HIGH AND ULTRA HIGH FREQUENCIES

---

## **VDB-VHF/UHF Dual-Band Antenna**

---

NSN 5985-20-002-6479

THE VDB-VHF/UHF IS A DUAL-BAND VEHICULAR WHIP ANTENNA SYSTEM DESIGNED TO PROVIDE VHF AND UHF COMMUNICATIONS FOR A RANGE OF MILITARY APPLICATIONS. IT IS DESIGNED FOR USE WITH TODAY'S CUTTING EDGE, WIDE-BAND, FREQUENCY AGILE RADIOS AND CAN BE USED TO REPLACE A MULTIPLE ANTENNA SETUP. THE VDB-VHF/UHF BOASTS A POWER HANDLING CAPABILITY OF 100 WATTS AND LESS THAN 3.5:1 VSWR ACROSS THE ENTIRE OPERATING BAND.

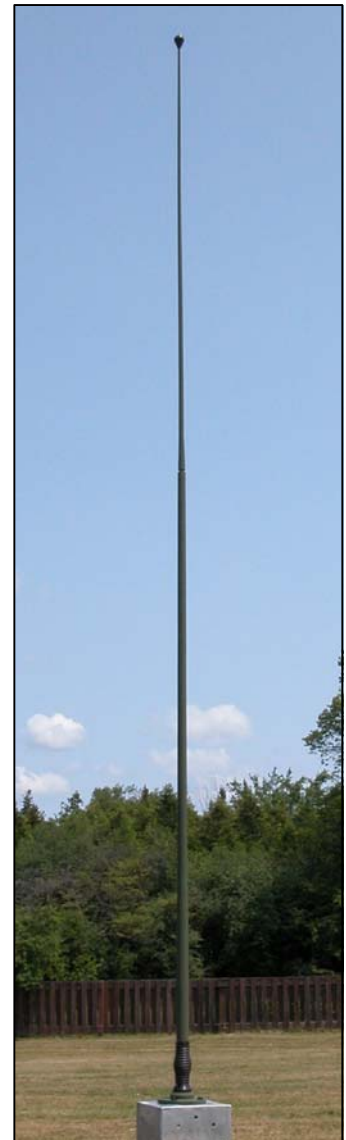
THE VDB-VHF/UHF WHIP ANTENNA COMES IN TWO PIECES WHICH EASILY THREAD TOGETHER TO CREATE A DIPOLE-STYLE ANTENNA SYSTEM WITH INTEGRAL MATCHING NETWORKS, ALL HOUSED WITHIN FIBREGLASS ENVELOPES. THE LOWER WHIP HAS AN INTEGRAL BASE SUPPORT SPRING WHICH THREADS INTO AN ALUMINUM MOUNTING FLANGE ATTACHED TO THE VEHICLE USING A STANDARD VEHICULAR MOUNT.

EMP (ELECTRO-MAGNETIC PULSE) AND HIGH VOLTAGE ISOLATION ARE ALSO INCORPORATED INTO THE VDB-VHF/UHF. THE UPPER WHIP SECTION PROVIDES HIGH VOLTAGE ISOLATION TO 20kVRMS PROVIDING SAFETY TO PERSONNEL AND EQUIPMENT IN THE CASE OF AN ACCIDENTAL STRIKE OF THE ANTENNA TO AN OVERHEAD POWERLINE. AN EYE PROTECTION DEVICE AT THE TIP OF THE ANTENNA PROVIDES FURTHER SAFETY TO THE USER.

### FEATURES:

- EXTREMELY WIDE BANDWIDTH
- PERFORMS WITH OR WITHOUT A GROUND PLANE
- RUGGED AND RELIABLE DESIGN
- BASE MOUNT FOR REPLACEMENT FLEXIBILITY
- HIGH VOLTAGE ISOLATION FOR SAFETY
- EASY ASSEMBLY/DISASSEMBLY

\* PATENT PENDING



# QUICK REFERENCE DATA

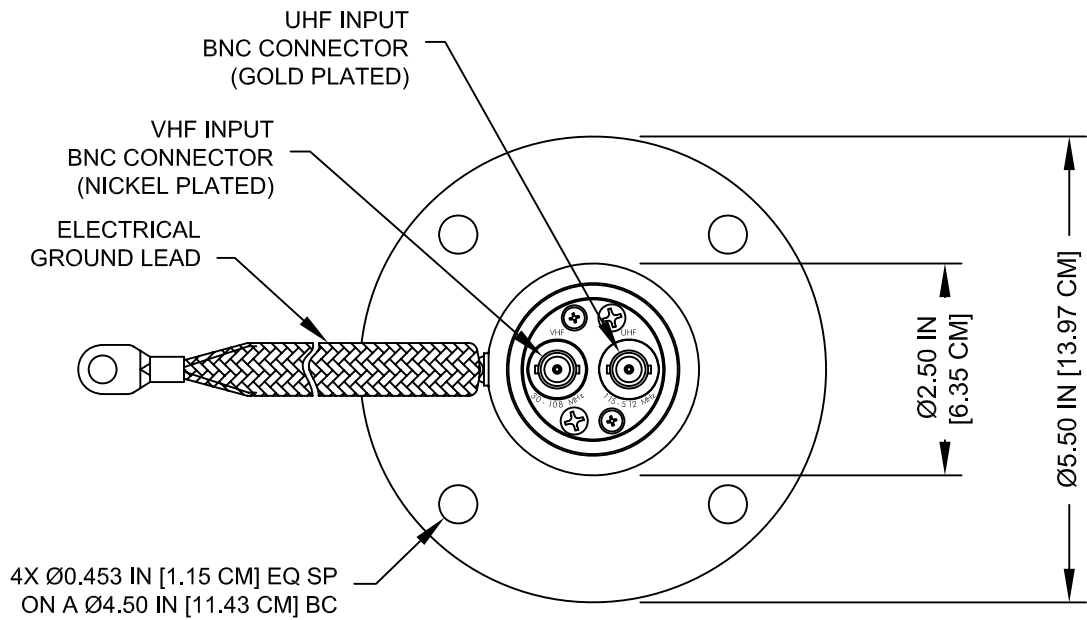
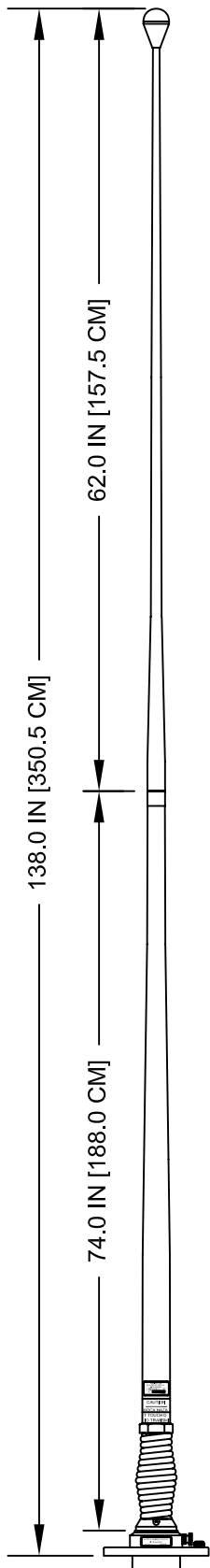
## VDB-VHF/UHF

### ELECTRICAL

	VHF INPUT	UHF INPUT
FREQUENCY RANGE	30 - 108 MHz	115 - 512 MHz
RADIATION PATTERN	OMNIDIRECTIONAL	OMNIDIRECTIONAL
GAIN	-5.0 dBi TO +1.0 dBi	-3.0 dBi TO +3.0 dBi
VSWR	3.5:1 MAXIMUM	3.0:1 MAXIMUM
POLARIZATION	VERTICAL	VERTICAL
POWER HANDLING	100 WATTS CONTINUOUS	100 WATTS CONTINUOUS
HIGH VOLTAGE PROTECTION	TOP ELEMENT: 20kVrms LOWER ELEMENT: 10 kVrms to MIL-STD-202	
NOM INPUT IMPEDANCE	50 OHMS	50 OHMS
INPUT CONNECTOR	BNC (NICKEL PLATED)	BNC (GOLD PLATED)

### MECHANICAL

WEIGHT	10.0 LBS (4.54 kg)
HEIGHT	138.0 INCHES (3.50 M)
TEMPERATURE	-60°F TO +160°F (-51°C TO +71°C)
WIND VELOCITY	50 MPH (80 KPH) OPERATING
IMPACT	25 BLOWS AT 25 MPH ON A 4"X4" OAK BEAM



BOTTOM VIEW

P.O. BOX 603 GUELPH, ONTARIO, CANADA, N1H 6L3  
 TEL 519-824-3220 FAX 519-824-3411

INTERNET: [www.valcom-guelph.com](http://www.valcom-guelph.com) EMAIL: [enquiries@valcom-guelph.com](mailto:enquiries@valcom-guelph.com)  
 Specifications are subject to change without notice.

