

World's Leading Manufacturer Of Fibreglass Whip Antennas



SPECIALISTS FOR VERY HIGH FREQUENCY

AS-4366A/U Antenna System

NSN 5985-21-920-0045

THE AS-4366A/U IS A GENERAL PURPOSE VHF BROADBAND COMMUNICATIONS ANTENNA SYSTEM. IDEAL FOR SHIPBOARD APPLICATIONS, THIS ANTENNA SYSTEM IS A BASE MOUNTED VERSION OF THE AS-3900A/VRC FEATURING RUGGED CONSTRUCTION AND RIGID MOUNTING OF THE WHIP SECTION.

THE AS-4366A/U ANTENNA SYSTEM PROVIDES OMNIDIRECTIONAL, VERTICALLY POLARIZED COVERAGE OVER THE 30 TO 88 MHz FREQUENCY RANGE. IT IS CONSERVATIVELY RATED FOR 150 WATTS OF RF INPUT POWER AND EXHIBITS A VSWR OF LESS THAN 3.5:1 OVER THE ENTIRE OPERATING BAND WITH REFERENCE TO A 50 OHM LINE IMPEDANCE. THE INPUT RF CONNECTION IS MADE THROUGH A SINGLE COAXIAL N-TYPE CONNECTOR LOCATED CENTRALLY ON THE BOTTOM OF THE MOUNTING BASE. THE MOUNTING BASE HOUSES THE MATCHING UNIT AND ELECTRO-MAGNETIC PULSE (EMP) PROTECTION.

TWO PERMANENTLY JOINED FIBREGLASS WHIP ELEMENTS AND A POLYCARBONATE MOUNTING BASE WITH A RIGID ANTENNA SUPPORT MAKE UP THE ANTENNA SYSTEM'S SIMPLE TWO-PIECE CONSTRUCTION. IT IS APPROXIMATELY 110 INCHES IN HEIGHT, HAS AN ANTENNA ELEMENT DIAMETER OF LESS THAN 1 INCH AND WEIGHS 11 POUNDS.

THE ANTENNA SYSTEM HAS BEEN DESIGNED TO MEET THE VIBRATION AND SERVICE REQUIREMENTS OF MIL-S-901, TYPE A AND MIL-STD-810. MOUNTING IS PROVIDED BY FOUR 0.453 INCH DIAMETER HOLES (FOR 3/8 HARDWARE) ON A 4.50 INCH DIAMETER BOLT CIRCLE LOCATED ON THE MOUNTING FLANGE AT THE BASE OF THE ANTENNA SYSTEM.

FEATURES:

- BROADBAND
- EXTREMELY RUGGED AND RELIABLE
- BASE MOUNT FOR PLACEMENT FLEXIBILITY
- HIGH VOLTAGE ISOLATION FOR SAFETY
- EASY ASSEMBLY/DISASSEMBLY



AS-4366/U

QUICK REFERENCE DATA

ELECTRICAL

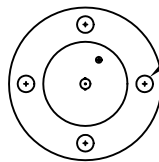
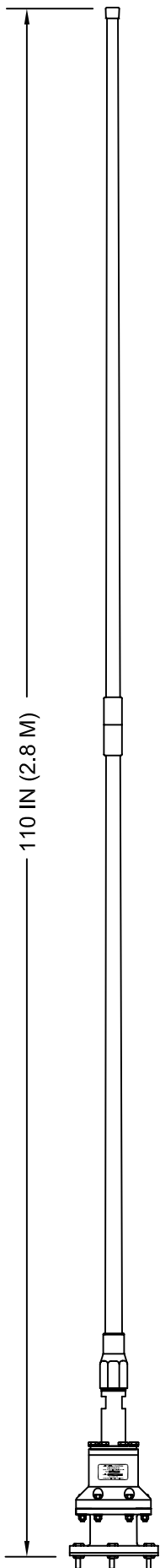
FREQUENCY RANGE	30-88 MHz
RADIATION PATTERN	OMNIDIRECTIONAL +/- 1dB
GAIN	-7.6 TO -1.1 db RELATIVE TO RESONANT QUARTER WAVE MONOPOLES OVER 30 TO 88 MHz
VSWR	3.5:1 MAXIMUM 2.5:1 AVERAGE
POLARIZATION	VERTICAL
POWER HANDLING	150 WATT AVERAGE
HIGH VOLTAGE PROTECTION	12 kV UPON CONTACT WITH HIGH POWER LINE OR HIGH VOLTAGE SOURCE

MECHANICAL

WEIGHT	11 LBS (5 kg)
HEIGHT	110 INCHES (2.79 M)

ENVIRONMENTAL

TEMPERATURE	-60°F TO +160°F (-51°C TO +71°C)
HUMIDITY	RELATIVE HUMIDITY 95%
ALTITUDE	-990 FT TO 16500 FT (-300 M TO 5000 M) ABOVE SEA LEVEL
VIBRATION	5-500 Hz
WIND VELOCITY	50 MPH (80 KPH) OPERATING
ICE LOADING	1/2 INCH (13 MM) RADIAL



4X Ø0.453 IN (11.50 MM) EQUASPACED
ON A Ø4.50 IN (114.3 MM) BOLT CIRCLE

MOUNTING FLANGE

